

2002 ACCESSORIES & EQUIPMENT

Instrument Panels - Sedona

DESCRIPTION & OPERATION

Battery voltage is fed to the instrument cluster through METER (10-amp) fuse, located in fuse box. Indicator lights and gauges are active when the ignition switch is in ON or START position. Indicator lights and gauges receive signals from either a switch or variable resistance sending unit.

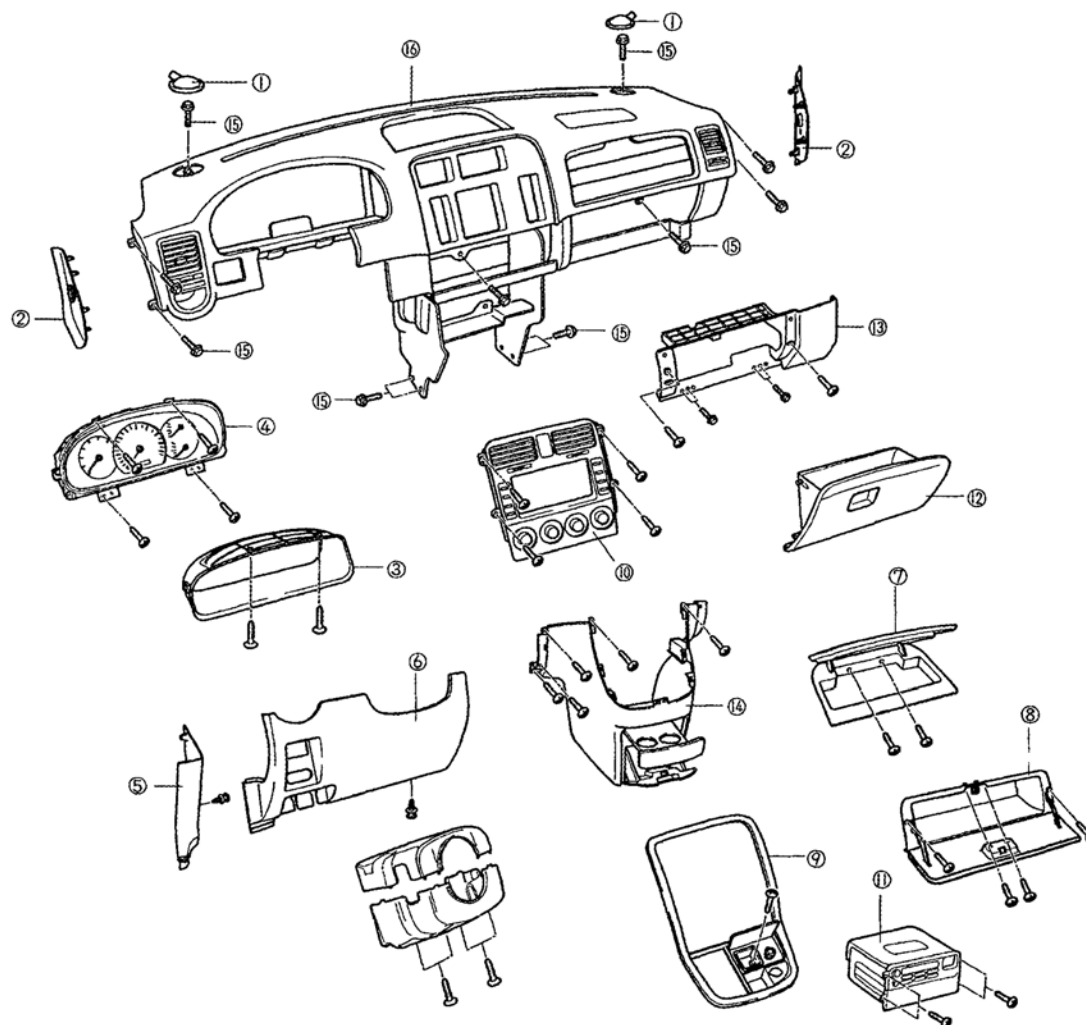
WARNING: Deactivate air bag system before performing any service operation. See **DISABLING & ACTIVATING AIR BAG SYSTEM** article. DO NOT apply electrical power to any component on steering column without first deactivating air bag system. Air bag may deploy.

NOTE: Anytime battery cables are disconnected from battery and then reconnected, theft deterrent system will operate (horn may sound and emergency lights may flash for about 3 minutes). To disarm system, insert ignition key and turn key to ACC position.

COMPONENT LOCATIONS

COMPONENT LOCATIONS

Component	Location
Engine Compartment Fuse Box	On Left Side Of Engine Compartment
Passenger Compartment Fuse Box	Behind Left Kick Panel
Temperature Gauge Sending Unit	Behind Thermostat Housing
Vehicle Speed Sensor (VSS)	On Left Rear Top Of Transmission



- | | |
|-----------------------------|---------------------------|
| (1) Speaker assembly | (9) Audio panel |
| (2) Side cover | (10) Heater control panel |
| (3) Instrument cluster trim | (11) Audio |
| (4) Instrument cluster | (12) Glove box |
| (5) A-pillar lower trim | (13) Lower RH panel |
| (6) Lower LH panel | (14) Center console |
| (7) Center upper tray | (15) Mounting bolt |
| (8) Multi box | (16) Instrument panel |

G00195780

Fig. 1: Identifying Instrument Panel Assembly
 Courtesy of KIA MOTORS AMERICA, INC.

COMPONENT TESTS

OIL PRESSURE INDICATOR

- 1. Disconnect oil pressure switch connector. Using a jumper wire, ground oil pressure connector Light Green/Yellow wire. Turn ignition on. See **WIRING DIAGRAMS** . Low oil pressure indicator should illuminate. If low oil pressure indicator does not illuminate, check indicator bulb and/or wiring harness for an open or short. If low oil pressure indicator illuminates, go to next step.
- 2. Ensure oil pressure is okay. Check continuity of oil pressure sending unit terminal to ground. Continuity should exist with engine stopped. With engine running, continuity should not exist. If continuity is not as specified, replace oil pressure sending unit.

SPEEDOMETER

- 1. Adjust the pressure of the tires to the specified level. Drive the vehicle onto a speedometer tester. Use wheel chocks as appropriate. Check if the speedometer indicator range is within the standard values in the service specifications.
- 2. Check speedometer tolerance and the odometer by test driving with Hi scan Pro and comparing ECM VSS data with speedometer. If the difference is more than 10%, replace speedometer.

CAUTION: Do not operate the clutch suddenly or increase/ decrease speed rapidly while testing

NOTE: Tire wear and tire over or under inflation will increase the indication error.

TACHOMETER

- 1. Connect Hi scan Pro and start the engine.
- 2. Compare the tester and tachometer indications. If the difference is excessive, replace the tachometer.

Revolution (RPM)	1,000	2,000	3,000	4,000	5,000	6,000	7,000	Remark
Tolerance (%)	+6 -12	+7.5 -1.5	+6	+6	+6	+6	+6	Gasoline

G01092719

Fig. 3: Tachometer Tolerance Chart
Courtesy of KIA MOTORS AMERICA, INC.

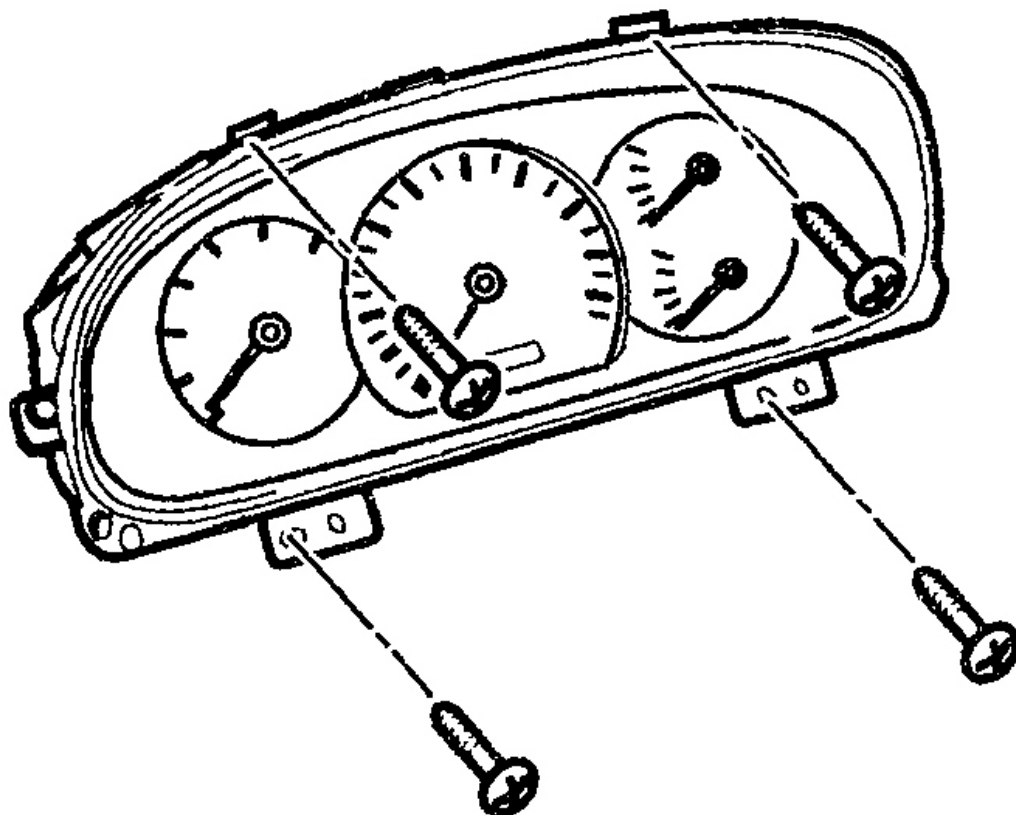
REMOVAL & INSTALLATION

WARNING: Deactivate air bag system before performing any service operation. See **DISABLING & ACTIVATING AIR BAG SYSTEM** article in RESTRAINTS. DO NOT apply electrical power to any component on steering column without first deactivating air bag system. Air bag may deploy.

INSTRUMENT CLUSTER

Removal & Installation

Disconnect negative battery cable. Remove driver air bag module. See **AIR BAG REMOVAL & INSTALLATION** article in RESTRAINTS. Remove steering wheel, turn signal assembly and upper lower column covers. Remove instrument cluster trim. Remove four screws from instrument cluster assembly. See **Fig. 4** . Disconnect electrical connector from rear of unit. Lift out cluster. To install, reverse removal procedure.



G00195781

Fig. 4: Removing Mounting Screws From Instrument Cluster
Courtesy of KIA MOTORS AMERICA, INC.

WIRING DIAGRAMS

See **INSTRUMENT CLUSTER** in SYSTEM WIRING DIAGRAMS article in ELECTRICAL.